

Completely erases digital data on all media types regardless of data capacity or interface type!
Erases both linear and perpendicular magnetic recording hard disks!

ADC MagWiper

Standard / Hybrid



HIGH PERFORMANCE, SECURE, INSTANTANEOUS MAGNETIC ERASURE

Erases Hard Disks and Other Magnetic Media in One Fast Operation!

A Magnetic Field of 800kA/m (~10,000 Oe) - Among the Highest Flux Levels Commonly Used in the Industry!

- **Recharging time after erasure approximately 17 second! *1**
JPT-MW-15000 recharging time within 17 seconds and data erased within 0.1 second, which is one of the fastest speeds.
- **HDD in their mounting racks can be inserted in the chamber as is**
HDD removed from a server and still in their mounting clamps can be inserted into the chamber of JPT-MW-25000. *2

Highly-Dependable Complete Erasure of All Magnetic Recording Media Types *3

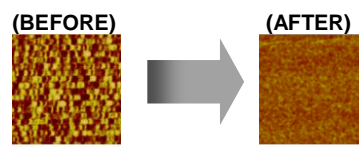
- **Magnetic erasure of perpendicular magnetic recording hard disks**
The method and field strengths used in all of the MagWiper products has been shown by testing using a magnetic force microscope (MFM) before and after erasure to completely erase a current mainstream large-capacity perpendicular magnetic recording hard disk. Regardless of capacity or interface type, even a hard disk that has physically failed can be completely erased within 0.1 sec.
- **Erases tapes and magnetic recording media**
MagWipers can also be used to erase cartridge tapes such as LTO/DDS/DAT/DLT/CMT/9940/3592, AIT, VHS, FD and other magnetic recording media.

LCD displays "Erasure Complete"



The LCD displays the "Erasure Complete" message showing total number of erasures and magnetic field intensity in: Oe(Oersted).

MFM (Magnetic Force Microscope) Test Results



2.5 inch Hitachi Model HGST-HTS545050B9A300 PMR HDD

A comparison of MFM images showing magnetic recording media before and after erasure.*4

*1 JPT-MW-15000 recharging time:17 sec, JPT-MW-25000 recharging time: 20 sec. *2 Maximum Media Dimensions JPT-MW-25000: 131 (W) x 109 (H) x 263 (D). If media size exceeds this, please remove the mounting clamp in order to fit the media into the chamber. *3 Unit erases magnetic recording media only. *4 Tested at the Tohoku University Electrical Communication Laboratory.

Completely erases digital data on all media types regardless of data capacity or interface type!
 The safety of the user is a top design priority!

ADC MagWiper Features

Extra Safety and Simple Operation

- Simple Operation:** Only need to push the "Erase" button.
- Flux Density Display:** The unit contains a magnetic flux density display which can be used to confirm that the magnetic flux density required for complete data erasure is being used.
- Malfunction Alarm:** If the magnetic flux density drops below a specified value, an alarm LED lights to give warning.
- Operating Indicator:** A flashing light can be seen at the edge of the chamber door during erasing, visually confirming that the magnetic field has been generated.
- Cooling Function:** The cooling fan runs continuously during operation.

※Note: Data erased by this product cannot be recovered. Also, because the servo signal is erased, hard disks and tapes that contain recorded servo signals cannot be reused. ※Do not operate near pregnant woman, implanted pacemakers, or defibrillators

MagWiper Specifications

Item	MagWiper Specifications	
	JPT-MW-15000	JPT-MW-25000
Model Number	JPT-MW-15000	JPT-MW-25000
Erase Target Magnetic Media	HDD, LTO, DDS/DAT, CMT, 9940, 3592, AIT, FD etc	HDD, LTO, DDS/DAT, CMT, 9940, 3592, AIT, FD, VHS etc
Compatible HD Recording	Perpendicular and In-plane (longitudinal)	Perpendicular and In-plane (longitudinal)
Recharging Time After Erasure*	approx. 17 sec	approx. 20 sec.
Data Erasing Time	0.1 sec.	0.1 sec.
Generated Magnetic Field	800 KA/m (Approx. 10000 Oe)	
Power Source*	AC100/115/200/220/240V 50/60 Hz	
Power Consumption	250 W	500 W
Dimensions (mm)	264 (W) x 220 (H) x 470 (D)	333 (W) x 285 (H) x 661 (D)
Maximum Media Dimensions/Chamber Size	115 (W) x 70 (H) x 145 (D)/115 (W) x 70 (H) x 140 (D)	131 (W) x 109 (H) x 150 (D)/131 (W) x 109 (H) x 263 (D)
Weight	22.9 kg	37.5 kg
Operating Environment	5--40°C. Humidity 75 % (non-condensing)	
Provided	Media Rack/Tray, Instruction manual	

* In the past, magnetic recording was mainly done using the in-plane recording method. However, the perpendicular recording method is now used for high capacity magnetic media. Magnetic characteristics are difference for these two types of memory. * Recharging time and power source vary by location.

About Us


Advanced Design Corporation utilizes the most advanced technology to provide data recovery services, data overwrite erasure products (DataSweeper), and HDD physical destruction equipment (Hard Disk Destroyer). For further information, please visit our website at <http://www.a-d.co.jp>

Other MagWiper Products

A large MagWiper is available with a chamber large enough to accept most laptop computers or several HDD and/or tapes. The media can be of any type or capacity.

DataRecovery

With our excellent capabilities and efficient support, Advanced Design is an excellent service choice to recover your data. Please contact us when your system goes down, computer will not run, or when you cannot open a file.



DataSweeper

Our highest level data recovery technology enables us to also offer our DataSweeper overwrite data erasure. Thus, we provide complete erasure solutions.




Distributed by:



JPT Global Solutions Ltd.

Unit B3, 7/F, Everwin Centre, 72 Hung To Road, Kwun Tong, Kowloon, Hong Kong
 Tel : (852) 3188-3800 Fax : (852) 3753-3993 Email : info@jptglobal.com
 Web: www.jptglobal.com

* Company and product names used in this document are protected by trademark or copy write laws.
 * The contents of this catalog may be changed without notice.